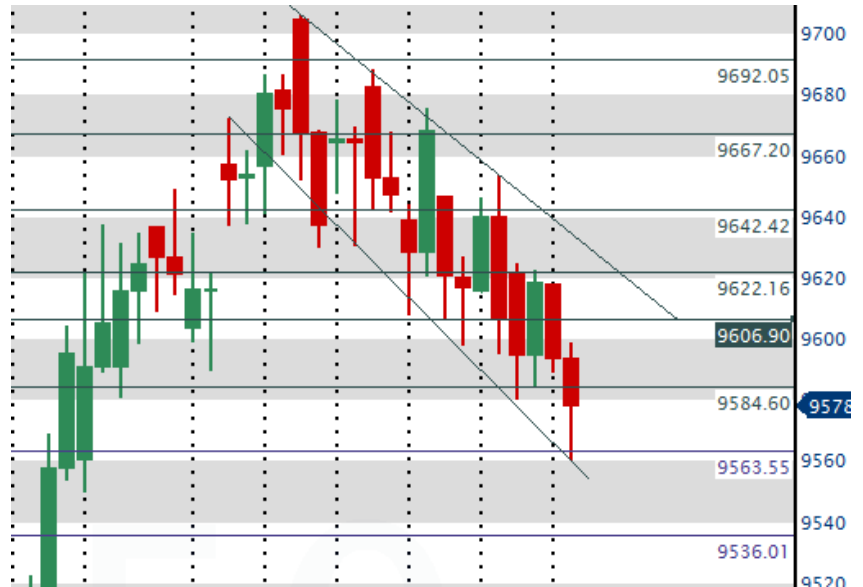




MORNING WRAP - UP

Market Outlook: The Nifty is expected to open in a constricted range; thereafter to consolidate between the Critical support at 9562 and the first resistance at 9607. Above this, the higher resistance is at 9631-9647 levels. Below 9562, once again weak trend could emerge whereas the first support is at 9536.



Global: U S indices ended marginally lower yesterday as large-cap technology shares extended losses. A more hawkish tone from the U S Federal Reserve on Wednesday and reports of special counsel Robert Mueller investigating President Donald Trump's conduct, led to a bit of political uncertainty caution among investors. Technology heavy Nasdaq led the losses, pulled down by Facebook, Google, Amazon.com, and Apple. Key Asian indices are trading mixed in the early morning trade. Nikkei is leading the gains as the yen fell against the dollar, and as investors wait for the BoJ's monetary policy decision, today. BoJ is widely

Country	LTP	Change	% Change
DOW JONES	21360	-15	-0.07
US - S&P 500	2432	-5	-0.22
NASDAQ - 100	5701	-26	-0.46
Germany - DAX	12692	-114	-0.89
France - CAC	5217	-26	-0.5
U K - FTSE	7419	-55	-0.74
HANGSENG	25667	102	0.4
Japan - NIKKEI	19936	105	0.53
China - SSE	3125	-8	-0.25
Thailand - SET	2238	-7	-0.31

expected to keep its policy rates unchanged with asset purchases of 80 trln yen annually. Governor Haruhiko Kuroda's talk will be in focus for any clues about an eventual exit from stimulus.

Data to Watch: FII Cash -645cr, Index Fut -577cr, Stock Fut -1,006cr, DII Cash +854cr.
Brent Crude: \$46.90/bbl; Rupee: 64.54/\$1; Gold: \$1,254.6/ounce; 10-yr yld: 6.4792%

In U K, Bank of England kept key policy rates un-changed. But, 3 out of 8 committee members were in for a rate hike as inflation has been accelerating faster, at 2.9% now.

Today : Q1 Advance tax numbers

Stocks in News:

Tejas Networks IPO subscribed 38% at the end of day 2. For more details about the IPO, <http://bit.ly/2t04haw>

Eris Life Science IPO opens today and closes on June 20. Price band Rs.600-603 per share. Min Qty 24 shares.

Neutral: ASHOK LEYLAND: Detailing of Company's intelligent Exhaust Gas Recirculation technology for BS-IV vehicles, which it claims superior compared to normal EGR technology at 1200, New Delhi. CANARA BANK: The board approved raising up to 35 bln rupees equity by way of a qualified institutional placement, rights issue, preferential allotment, or follow-on public offer. CENTURY PLYBOARDS: Subsidiary Century Ply (Singapore) has acquired 49% stake in Huesoulin Wood Processing Factory Co. COAL INDIA: Steel Minister Chaudhary Birender Singh said the government had asked the company to set up more washeries at pitheads to convert thermal coal into coking coal, and reduce imports. DB CORP: Diligent Media Corp and the company have mutually decided to terminate licence agreements. Consequently, the company will stop publication of DNA newspaper from Jaipur and Ahmedabad from today. EICHER MOTORS: Royal Enfield is offering a price cut with effect from Saturday as a result of the proposed implementation of goods and services tax from Jul 1. HDFC: Paid 4.75 bln rupees as advance tax for Apr-Jun, up 2.37% from the corresponding period last year. IGL : Shareholders have approved increasing shareholding limits for FII/FPI to 30% of paid-up equity share capital, from 24% earlier. IPCA LAB: Has received a letter from the US FDA stating that henceforth, all the drugs manufactured at the company's manufacturing facility in Ratlam, Madhya Pradesh, will be denied admission into the U S until the company can demonstrate that the drugs manufactured at the unit and intended for the US are in the compliance with good manufacturing practices. JK CEMENT: The board will meet on Jun 23 to consider raising funds through securities. OMC: Introducing the system of daily revisions in prices of fuels, IOC has announced a cut of 1.12 rupees per litre in price of petrol and 1.24 rupees per litre in that of diesel for Friday, effective for 24 hours. RELIANCE INDUSTRIES: The company and BP will soon award contracts as part of a 400-bln-rupee move to restart exploration activity in the R-series deep water gas fields in the KG-D6 block off the east coast of India. RIL and BP said they will first start work on the R-Series project of the KG-D6 block, and would submit development plans for the satellite field and D55 field by the end of 2017. TATA MOTORS: Will sell 43% stake in its arm Tata Technologies to private equity firm Warburg Pincus for \$360 mln.

indi15

Stock	QTY	Entry Rate	Value	CMP	Current Value
Amara Raja	100	861	86100	838.1	83810
Colgate	100	872.6	87260	1078.75	107875
LIC Housing	100	508.25	50825	776.6	77,660
Triveni Turbine	200	128.57	25714	135.8	27,160
Asian Paints	100	849.80	84980	1140.3	114,030
HCL Tech	100	816.00	81600	844.40	84,440
ITC	450	216.00	97200	301.9	135,855
Kotak Bank	100	660.75	66075	962.6	96,260
Tata Motors	200	477.00	95400	448.3	89,660
Praj Ind	700	87.35	61145	78.45	54,915
Reliance Ind	100	1,031.40	103140	1383.95	138,395
P I Industries	100	810.00	81000	812.25	81,225
Syngene	200	382.60	76520	457.8	91,560
Zee Entertainment	200	415.88	83176	508.35	101,670
SBI	100	279.70	27970	284	28,400
			1,108,105		1,312,915

Profit/Loss Booked	QTY	Entry	Value	Exited@	
Aditya Birla Nuvo	100	829	82900	1002	100,200
ZEEL	100	388.85	38885	439	43,900
Repc Home	100	590.05	59,005	670.2	67,020
Motherson Sumi	300	253.8	76,140	282.1	84,630
TataMotors	300	377.7	113,310	424.25	127,275
PI IND	100	579.7	57,970	687	68,700
SBIN	100	279.7	27,970	279.8	27,980
Marico	300	242.2	72,660	271.4	81,420
Triveni Turbine	200	128.57	25,714	137.45	27,490
Sarla Perf. Fibres	700	64.46	45,122	58.17	40,719

Notional P/L	204,810
Profit Booked	69,658
Total Profit	274,468
Current NAV	1,429,941
% Gain	23.75
Initial Value	1,155,473
Nifty on Mar 23	7716.5
NIFTY.NSI	9578.05
% Change	24.12

indiCAP 15
Emerging Stories

Stock	QTY	Entry Rate	Value	CMP	Current Value
Apar Industries	200	471.59	94318	829	165,800.00
Astral Poly Technik	100	437.87	43787	694.85	69,485.00
Avanti Feeds	100	448.45	44845	1364.2	136,420.00
Capital First	200	503.33	100666	722.2	144,440.00
Garware Wall Ropes	100	343.68	34368	849.45	84,945.00
Godrej Properties	200	321.28	64256	553.55	110,710.00
Greenply Industries	300	216.03	64809	284.05	85,215.00
LA Opala RG	100	576.97	57697	539.05	53,905.00
Mold-tek packaging	200	181.65	36330	284.8	56,960.00
Sadbhav Engineering	300	275.35	82605	307.35	92,205.00
Sagar Cements	200	574.26	114852	829.95	165,990.00
Shilpa Medicare	200	477.25	95450	650.5	130,100.00
Suprajit Engineering	200	171.06	34212	296.75	59,350.00
Srikalahasthi Pipes	100	278.85	27885	352.5	35,250.00
AIA Engineering	100	1315	131500	1425.25	142,525.00
			1027580		1,533,300.00
STOCKS EXITED					
Garware Wall Ropes	100	343.68	34368	358.04	35,804.00
Suprajit Engineering	200	148.62	29724	172.1	34,420.00
Astral Poly	100	437.85	43785	452	45,200.00
Avanti Feeds	100	448.45	44845	478	47,800.00
Mold-tek packaging	200	156.95	31390	163	32,600.00
KPR Mills	100	879.7	87970	980.4	98,040.00
Heritage Foods	100	514.56	51456	932	93,200.00

Entry Rate	1,124,045
Gain for 100 unit	569,246
Current NAV	1,693,291
% Gain of 100 unit	50.64
Nifty 500 on May 11	6593
Nifty 500 Today	8400.2
% Gain in Nifty500	27.41

Prepared by: Inditrade Capital Limited

SEBI Registration No: INZ000093831. NSDL DP ID:IN301895 CDSL DP ID:12048100

NMCE:CL0101 NCDEX:00224| MCX:10190I IPSTA:351 MUTUAL FUNDS:ARN 53315

Customer Care :18605006543 / 0484-4100200

Send your grievances to investorgrievance@inditrade.com | Customer Care Email-id customercare@inditrade.com

Disclaimer: This report has been prepared by Inditrade Capital Ltd. This does not constitute an offer or solicitation for the purchase or sale of any financial instrument or as an official confirmation of any transaction. The information contained herein is from publicly available data or other sources believed to be reliable. The user assumes the entire risk of any use made of this information. Each recipient of this report should make such investigation as it deems necessary to arrive at an independent evaluation of an investment in the securities of companies referred to in this report (including the merits and risks involved), and should consult his own advisors to determine the merits and risks of such investment. The investment discussed or views expressed may not be suitable for all investors. This information is strictly confidential and is being furnished to you solely for your information. This information should not be reproduced or redistributed or passed on directly or indirectly in any form to any other person or published, copied, in whole or in part, for any purpose. The information given in this report is as of the date of this report and there can be no assurance that future results or events will be consistent with this information. This information is subject to change without any prior notice. Inditrade capital reserves the right to make modifications and alterations to this statement as may be required from time to time. Inditrade or any of its affiliates/ group companies shall not be in any way responsible for any loss or damage that may arise to any person from any inadvertent error in the information contained in this report. Neither Inditrade Capital nor any of its affiliates, group companies, directors, employees, agents or representatives shall be liable for any damages whether direct, indirect, special or consequential including loss of revenue or lost profits that may arise from or in connection with the use of the information. The disclosures of interest statements incorporated in this report are provided solely to enhance the transparency and should not be treated as endorsement of the views in the report.

Analyst Certification: The analyst for this report certifies that all of the views expressed in this report accurately reflect his personal views about the subject company or companies and its or their securities, and no part of his compensation was, is or will be, directly or indirectly related to specific recommendations or views expressed in this report. Neither the analyst, nor Inditrade Capital holds not more than 1% in any of the company discussed in this report. The analyst is neither a previous employee nor, getting any kind of remuneration from any of the company discussed in this report.

SEBI Reg No: INH200001418

Inditrade Capital Limited, JJ Complex, Dairy Methanam Road, Edapally Cochin, Kerala 682 024

We're on the Web! Visit us at www.inditrade.com