



MORNING WRAPUP

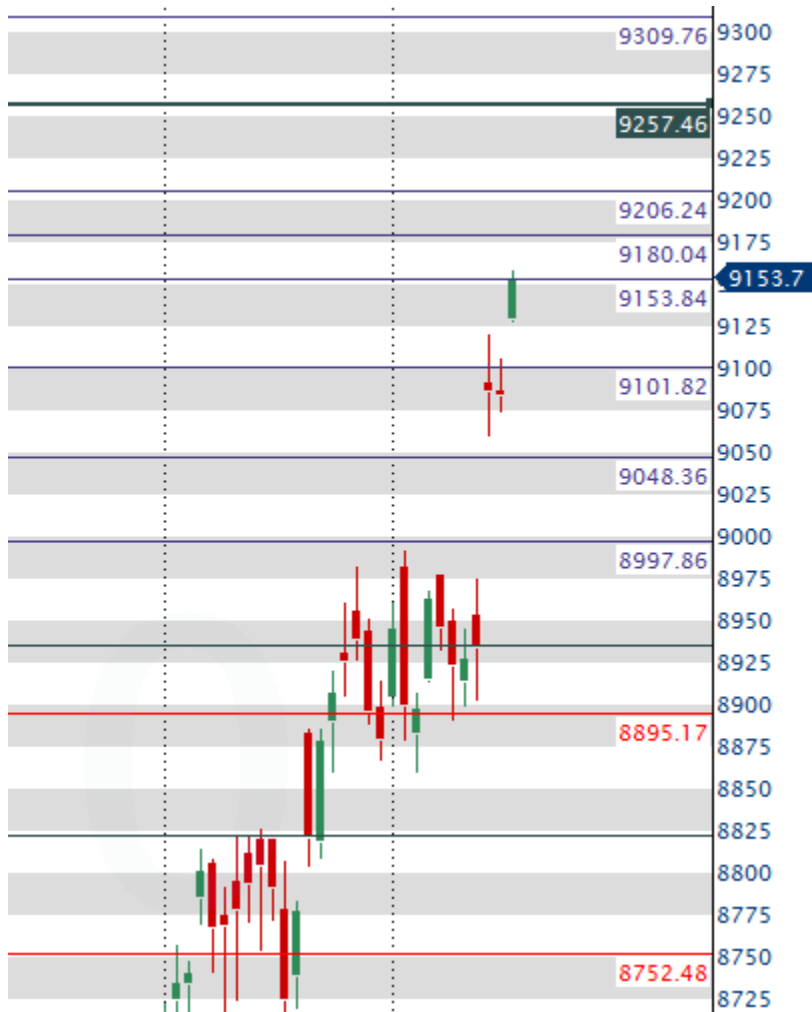


Market Outlook: The indices are expected to open with marginal gains; Nifty to move between its Critical support at 9121 and the first resistance at 9180. Above this, the higher resistance is at 9206. During the day, below 9121, the first support is at 9101. The major support region is at 9074-9048 range.

Global: U S indices ended marginally lower yesterday as crude oil prices slipped, and on profit booking in utility and healthcare stocks. Nasdaq turned positive at the close of trade as Oracle Corp rose 6.2% after it reported quarterly earnings above expectations. In U K, Bank of England in its policy meeting left interest rate unchanged at 0.25 percent. Key Asian indices are trading mixed with no major gains or losses. The Bank of Japan held its rates steady in policy meeting yesterday.

Data to Watch: FII Cash +1,360cr, Index Fut +857cr, Stock Fut -166cr, DII Cash -88cr. Brent Crude: \$51.75/bbl; Rupee: 65.4100/\$1; Gold: \$1,227.1/ounce; 10-yr yld: 6.8417%

The GST Council approved draft Bills on SGST and UGST laws. It has already approved CGST and IGST laws and the compensation laws. With this, all four draft laws for GST implementation have been cleared by the GST Council. The government intends to get these laws passed in the ongoing Budget session of Parliament, which ends on Apr 12.



Country	LTP	Change	% Change
U S DOW	20935	-15	0.07
NASDAQ - 100	5412	-4	-0.08
Germany - DAX	12083	73	0.61
France - CAC	5013	28	0.56
U K - FTSE	7416	47	0.64
HongKong	24341	52	0.22
Japan - NIKKEI	19527	-63	-0.32
China - SSE	3269	0	0
Thailand - SET	2222	25	1.13

Stocks in News:

Music Broadcast IPO listing today

Neutral: GMR INFRA: Said that Delhi International Airport, a consortium led by the company, had signed a land licence agreement with European aircraft manufacturer Airbus to set up India's first full flight simulator at the Aerocity-Terminal District of Indira Gandhi International Airport, New Delhi. HINDALCO: Arm Novelis Inc has signed a pact to provide aluminium alloys for a wide range of structural components for electric car company NIO's sports utility vehicles over the next five years. IRB INFRA: Plans to launch India's first infrastructure investment trust in April. LIC HOUSING: Has raised 6.60 bln rupees through the issuance of bonds maturing in three years at a coupon rate of 7.80%. LUPIN: Has launched generic of Minastrin 24 Fe tablets in the US, including Norethindrone Acetate and Ethinyl Estradiol Chewable Tablets of strengths 1 mg and 0.02 mg and Ferrous Fumarate Tablets of 75 mg strength. MARICO: Has started commercial production of value added personal care products at its new plant in Guwahati, Assam. NOCIL: Its board has approved the expansion of capacities of rubber chemicals and their intermediates at the company's plants situated at Navi Mumbai and Dahej. ONGC: Will invest over 215 bln rupees to develop India's deepest gas discovery by 2022-23, helping it more than double output from its prime KG basin block. RELIANCE INFRA: The board of the company approved raising up to 20 bln rupees through securities, including shares, to qualified institutional buyers. THERMAX: Laid foundation of a new plant in Sri City, Hyderabad.

Fund Action: CAPITAL FIRST: JV and Associates LLP sold 1.57 mln shares, or 1.61% stake, in the company at 688.55 rupees per share. PNC INFRATECH: NYLIM Jacob Ballas India (FVCI) III LLC sold 1.72 mln shares, or 0.67% stake, in the company, at 107.66 rupees per share

indi15

Stock	QTY	Rate	Value	CMP	Current Value
Amara Raja Bat	100	861	86100	884.9	88490
COLGATE	100	872.6	87260	978.7	97870
LIC HOUSING	100	508.25	50825	592.9	59,290
Triveni Turbine	400	128.57	51428	123.65	49,460
Asian Paints	100	849.80	84980	1087.55	108,755
HCL TECH	100	816.00	81600	855.40	85,540
ITC	450	216.00	97200	268.45	120,803
Kotak Bank	100	660.75	66075	851.4	85,140
Tata Motors	200	477.00	95400	480.95	96,190
Praj Ind	700	87.35	61145	80.05	56,035
Reliance Ind	100	1,031.40	103140	1297.65	129,765
Sarla Perfo Fibers	700	64.46	45122	60.65	42,455
SYNGENE	200	382.60	76520	523.75	104,750
ZEE Ent	200	415.88	83176	525.45	105,090
SBIN	100	279.70	27970	279.3	27,930
			1,097,941		1,257,563
Profit/Loss Booked	QTY	Entry	Value	Exited@	
Aditya Birla Nuvo	100	829	82900	1002	100,200
ZEEL	100	388.85	38885	439	43,900
Repco Home	100	590.05	59,005	670.2	67,020
Motherson Sumi	300	253.8	76,140	282.1	84,630
TataMotors	300	377.7	113,310	424.25	127,275
PI IND	100	579.7	57,970	687	68,700
SBIN	100	279.7	27,970	279.8	27,980
Marico	300	242.2	72,660	271.4	81,420

Notional P/L	159,622
Profit Booked	72,285
Total Profit	231,907
Current NAV	1,387,380
% Gain	20.07
Initial Value	1,155,473
Nifty on Mar 23	7716.5
NIFTY.NSI	9153.7
% Change	18.63

indiCAP 15
Emerging Stories

Name	QTY	Entry Rate	Entry Value	CMP	VALUE
APAR INDUSTRIES LTD	200	471.59	94318	768.1	153,620.00
ASTRAL POLY TECHNIK LTD	100	437.87	43787	538.3	53,830.00
AVANTI FEEDS LTD	100	448.45	44845	732.15	73,215.00
CAPITAL FIRST LTD	200	503.33	100666	694.75	138,950.00
GARWARE WALL ROPES LTD	100	343.68	34368	687.75	68,775.00
GODREJ PROPERTIES LTD	200	321.28	64256	376	75,200.00
GREENPLY INDUSTRIES LTD	300	216.03	64809	287.05	86,115.00
LA OPALA RG LTD	100	576.97	57697	514.65	51,465.00
MOLD-TEK PACKAGING LTD	200	181.65	36330	228.05	45,610.00
SADBHAV ENGINEERING LTD	300	275.35	82605	290.3	87,090.00
SAGAR CEMENTS LTD	200	574.26	114852	730.15	146,030.00
SHILPA MEDICARE	200	477.25	95450	642.9	128,580.00
SUPRAJIT ENGINEERING LTD	200	171.06	34212	219.45	43,890.00
SRIPIPES	100	278.85	27885	349.4	34,940.00
AIA ENGG	100	1315	131500	1495.1	149,510.00
			1027580		1,336,820.00
STOCKS EXITED					
GARWARE WALL ROPES LTD	100	343.68	34368	358.04	35,804.00
SUPRAJIT	200	148.62	29724	172.1	34,420.00
ASTRAL POLY	100	437.85	43785	452	45,200.00
Avanti Feeds	100	448.45	44845	478	47,800.00
Mold-tek Packaging	200	156.95	31390	163	32,600.00
KPR MILLS	100	879.7	87970	980.4	98,040.00
HERITAGE FOODS LTD	100	514.56	51456	932	93,200.00

Entry Rate	1124045
Gain for 100 unit	372,766
Current NAV	1,496,811
% Gain of 100 unit	33.16
Nifty 500 on May 11	6593
Nifty 500 Today	7928.55
% Gain in Nifty500	20.26

Disclaimer :This report has been prepared by Inditrade Capital Ltd. This does not constitute an offer or solicitation for the purchase or sale of any financial instrument or as an official confirmation of any transaction. The information contained herein is from publicly available data or other sources believed to be reliable. The user assumes the entire risk of any use made of this information. Each recipient of this report should make such investigation as it deems necessary to arrive at an independent evaluation of an investment in the securities of companies referred to in this report (including the merits and risks involved), and should consult his own advisors to determine the merits and risks of such investment. The investment discussed or views expressed may not be suitable for all investors. This information is strictly confidential and is being furnished to you solely for your information. This information should not be reproduced or redistributed or passed on directly or indirectly in any form to any other person or published, copied, in whole or in part, for any purpose. The information given in this report is as of the date of this report and there can be no assurance that future results or events will be consistent with this information. This information is subject to change without any prior notice. Inditrade capital reserves the right to make modifications and alterations to this statement as may be required from time to time. Inditrade or any of its affiliates/ group companies shall not be in any way responsible for any loss or damage that may arise to any person from any inadvertent error in the information contained in this report. Neither Inditrade Capital nor any of its affiliates, group companies, directors, employees, agents or representatives shall be liable for any damages whether direct, indirect, special or consequential including loss of revenue or lost profits that may arise from or in connection with the use of the information. The disclosures of interest statements incorporated in this report are provided solely to enhance the transparency and should not be treated as endorsement of the views in the report.

Prepared by: Inditrade Capital Limited NSE - INZ230012437 BSE - INZ010012433 MSEI - INZ260012430
NSDL DP ID:IN301895 CDSL DP ID:12048100 NMCE:CL0101 NCDEX:00224 | MCX:10190 IPSTA:351 MUTUAL FUNDS:ARN
53315

Customer Care :18605006543 / 0484-4100200

Send your grievances to investorgrievance@inditrade.com | Customer Care Email-id customercare@inditrade.com

Analyst Certification: The analyst for this report certifies that all of the views expressed in this report accurately reflect his personal views about the subject company or companies and its or their securities, and no part of his compensation was, is or will be, directly or indirectly related to specific recommendations or views expressed in this report. Neither the analyst, nor Inditrade Capital holds not more than 1% in any of the company discussed in this report .The analyst is neither a previous employee nor, getting any kind of remuneration from any of the company discussed in this report. **SEBI Reg No: INH200001418**