

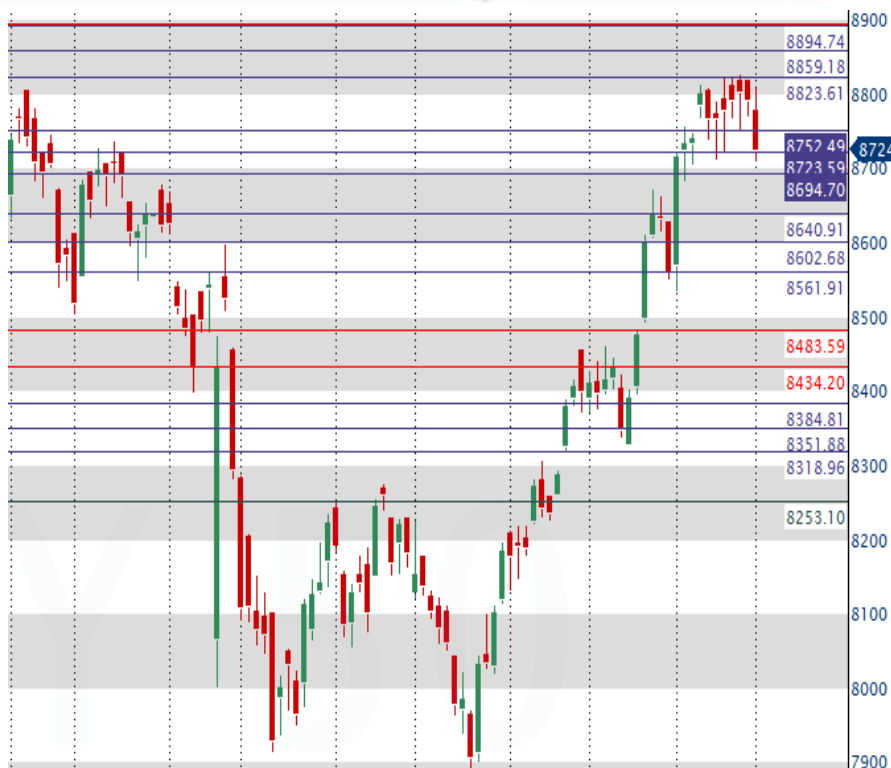


MORNING WRAPUP



**Market Outlook:** The indices are likely to open flat-to-marginally negative. The Critical level for Nifty today is at 8723 and after the first 30 minutes, if it fails to hold above this, then there could be more intraday downside. The first lower support is at 8694. Below this, the major support is at 8664. During the day, on an up move, the first resistance is at 8752. Above this, the benchmark could test the higher resistance zone at 8784-8806.

**Global:** U S equity markets continued its up move yesterday, recording new highs on positive economic data and on-going optimism that President Trump will cut corporate taxes. Better than expected rise in retail sales and consumer prices in January is reinforcing confidence on the economy. A rate hike on upcoming policy meeting in March is firm after Federal Reserve Chair Jannet Yellen’s testimony before the house of financial services committee. Key Asian indices are trading mixed in the early morning trade. Nikkei is trading marginally lower. Meanwhile, BoJ Governor Haruhiko Kuroda warned that low profitability at financial institutions could sow seeds of a new financial crisis, expressing his views on the demerits of aggressive monetary easing by major central banks.



Country	LTP	Change	% Change
U S DOW	20612	107	0.52
NASDAQ - 100	5302	31	0.59
Germany - DAX	11794	22	0.19
France - CAC	4925	29	0.59
U K - FTSE	7302	34	0.47
HongKong	24074	79	0.33
Japan - NIKKEI	19318	-120	-0.62
China - SSE	3213	0	0
Thailand - SET	2221	4	0.17

**Data to Watch:** FII Cash +226cr, Stock fut: -1667cr, Index fut: +689cr, DII Cash +249cr. Brent Crude: \$55.75/bbl; Rupee: 66.8975/\$1; Gold: \$1,233.1/ounce; 10-yr yld: 6.8619%

## Stocks in News:

**Positive:** TCS: The board of directors of the company will meet on February 20 to consider buy-back of shares. Presently, Tata Sons owns 73.3% stake in the company.

**Neutral:** BEL: Has bagged offset contract from Elbit Systems Electro-Optics Elop, Israel, to supply 10 CoMPASS Systems for use in Light Combat Helicopters. COAL INDIA: Average e-auction prices for coal have risen after about 12 months to 1,546 rupees per tn in Oct-Dec, 17% higher on quarter. DLF: Expects debt to shoot up owing to muted sales and collections that will persist for a few quarters and lead to a shortfall in operating cash flows. JET AIRWAYS: Deutsche Lufthansa AG plans to have more connecting flights to India through ties with the company, Chief Executive Officer Carsten Spohr said. PARAG MILK FOODS: Has launched whey protein supplements under the brand name 'Avvatar', marking its foray into the 10-bln-rupee sports nutrition market. SAGAR CEMENTS: The company has raised 1.73 bln rupees through a qualified institutional placement of 2.4 mln shares at 720 rupees each. SBI: The Cabinet gave its final approval for the merger of SBI and five of its associate banks. Of the five associate banks of SBI, three - SBT, SBBJ and Mysore Bank - are listed, while two are unlisted. SUN PHARMA: Plans to shift production of key products from its Halol factory in Gujarat to other facilities.

**Fund Action:** 3I INFOTECH: ICICI Strategic Investments Fund sold 1.3 mln shares, or 0.12% stake, in the company during Feb 10-14. GAYATRI PROJECTS: India Max Investment Fund has sold 2.5 mln shares, or 7.05% stake, in the company at 140.03 rupees a share. HEALTHCARE GLOBAL ENTERPRISES: Franklin Templeton MF has bought 1.8 mln more shares, or 2.1% stake, in the company at 244.0 rupees a share

# indi15

Stock	QTY	Rate	Value	CMP	Current Value
Amara Raja Bat	100	861	86100	848.5	84850
COLGATE	100	872.6	87260	883.15	88315
LIC HOUSING	100	508.25	50825	548.45	54,845
Triveni Turbine	400	128.57	51428	123.4	49,360
Asian Paints	100	849.80	84980	981.7	98,170
HCL TECH	100	816.00	81600	830.30	83,030
ITC	450	216.00	97200	273.4	123,030
Kotak Bank	100	660.75	66075	784.3	78,430
Tata Motors	200	477.00	95400	436.45	87,290
Praj Ind	700	87.35	61145	77.25	54,075
Reliance Ind	100	1,031.40	103140	1051.3	105,130
Sarla Perfo Fibers	700	64.46	45122	58.85	41,195
SYNGENE	200	382.60	76520	475.6	95,120
ZEE Ent	200	415.88	83176	520.7	104,140
SBIN	100	279.70	27970	268.95	26,895
			1,097,941		1,173,875
Profit/Loss Booked	QTY	Entry	Value	Exited@	
Aditya Birla Nuvo	100	829	82900	1002	100,200
ZEEL	100	388.85	38885	439	43,900
RepcO Home	100	590.05	59,005	670.2	67,020
Motherson Sumi	300	253.8	76,140	282.1	84,630
TataMotors	300	377.7	113,310	424.25	127,275
PI IND	100	579.7	57,970	687	68,700
SBIN	100	279.7	27,970	279.8	27,980
Marico	300	242.2	72,660	271.4	81,420

Notional P/L	75,934
Profit Booked	72,285
Total Profit	148,219
Current NAV	1,303,692
% Gain	12.83
Initial Value	1,155,473
Nifty on Mar 23	7716.5
NIFTY.NSI	8724.7
% Change	13.07

Name	QTY	Entry Rate	Entry Value	CMP	VALUE
APAR INDUSTRIES LTD	200	471.59	94318	723.95	144,790.00
ASTRAL POLY TECHNIK LTD	100	437.87	43787	449.25	44,925.00
AVANTI FEEDS LTD	100	448.45	44845	582.25	58,225.00
CAPITAL FIRST LTD	200	503.33	100666	646.05	129,210.00
GARWARE WALL ROPES LTD	100	343.68	34368	607.75	60,775.00
GODREJ PROPERTIES LTD	200	321.28	64256	355.05	71,010.00
GREENPLY INDUSTRIES LTD	300	216.03	64809	278.65	83,595.00
LA OPALA RG LTD	100	576.97	57697	476.65	47,665.00
MOLD-TEK PACKAGING LTD	200	181.65	36330	208.4	41,680.00
SADBHAV ENGINEERING LTD	300	275.35	82605	275.55	82,665.00
SAGAR CEMENTS LTD	200	574.26	114852	751.05	150,210.00
SHILPA MEDICARE	200	477.25	95450	651.25	130,250.00
SUPRAJIT ENGINEERING LTD	200	171.06	34212	204.35	40,870.00
SRIPIPES	100	278.85	27885	302.6	30,260.00
AIA ENGG	100	1315	131500	1450	145,000.00
			1027580		1,261,130.00
<b>STOCKS EXITED</b>					
GARWARE WALL ROPES LTD	100	343.68	34368	358.04	35,804.00
SUPRAJIT	200	148.62	29724	172.1	34,420.00
ASTRAL POLY	100	437.85	43785	452	45,200.00
Avanti Feeds	100	448.45	44845	478	47,800.00
Mold-tek Packaging	200	156.95	31390	163	32,600.00
KPR MILLS	100	879.7	87970	980.4	98,040.00
HERITAGE FOODS LTD	100	514.56	51456	932	93,200.00

Entry Rate	1124045
Gain for 100 unit	297,076
Current NAV	1,421,121
% Gain of 100 unit	26.43
Nifty 500 on May 11	6593
Nifty 500 Today	7531.6
% Gain in Nifty500	14.24

**Disclaimer :** This report has been prepared by Inditrade Capital Ltd. This does not constitute an offer or solicitation for the purchase or sale of any financial instrument or as an official confirmation of any transaction. The information contained herein is from publicly available data or other sources believed to be reliable. The user assumes the entire risk of any use made of this information. Each recipient of this report should make such investigation as it deems necessary to arrive at an independent evaluation of an investment in the securities of companies referred to in this report (including the merits and risks involved), and should consult his own advisors to determine the merits and risks of such investment. The investment discussed or views expressed may not be suitable for all investors. This information is strictly confidential and is being furnished to you solely for your information. This information should not be reproduced or redistributed or passed on directly or indirectly in any form to any other person or published, copied, in whole or in part, for any purpose. The information given in this report is as of the date of this report and there can be no assurance that future results or events will be consistent with this information. This information is subject to change without any prior notice. Inditrade capital reserves the right to make modifications and alterations to this statement as may be required from time to time. Inditrade or any of its affiliates/ group companies shall not be in any way responsible for any loss or damage that may arise to any person from any inadvertent error in the information contained in this report. Neither Inditrade Capital nor any of its affiliates, group companies, directors, employees, agents or representatives shall be liable for any damages whether direct, indirect, special or consequential including loss of revenue or lost profits that may arise from or in connection with the use of the information. The disclosures of interest statements incorporated in this report are provided solely to enhance the transparency and should not be treated as endorsement of the views in the report.

**Prepared by:** Inditrade Capital Limited NSE - INZ230012437 BSE - INZ010012433 MSEI - INZ260012430  
NSDL DP ID:IN301895 CDSL DP ID:12048100 NMCE:CL0101 NCDEX:00224 | MCX:10190 IPSTA:351 MUTUAL FUNDS:ARN  
53315

Customer Care :18605006543 / 0484-4100200

Send your grievances to [investorgrievance@inditrade.com](mailto:investorgrievance@inditrade.com) | Customer Care Email-id [customercare@inditrade.com](mailto:customercare@inditrade.com)

**Analyst Certification:** The analyst for this report certifies that all of the views expressed in this report accurately reflect his personal views about the subject company or companies and its or their securities, and no part of his compensation was, is or will be, directly or indirectly related to specific recommendations or views expressed in this report. Neither the analyst, nor Inditrade Capital holds not more than 1% in any of the company discussed in this report .The analyst is neither a previous employee nor, getting any kind of remuneration from any of the company discussed in this report. **SEBI Reg No: INH200001418**